

# *The Punggol Dream*







**HANSANG**  
Korean Restaurant & Market



Video



# *The Punggol Dream*

**A Place to Call Home  
A Strategic Base to Reach an Exciting Generation**

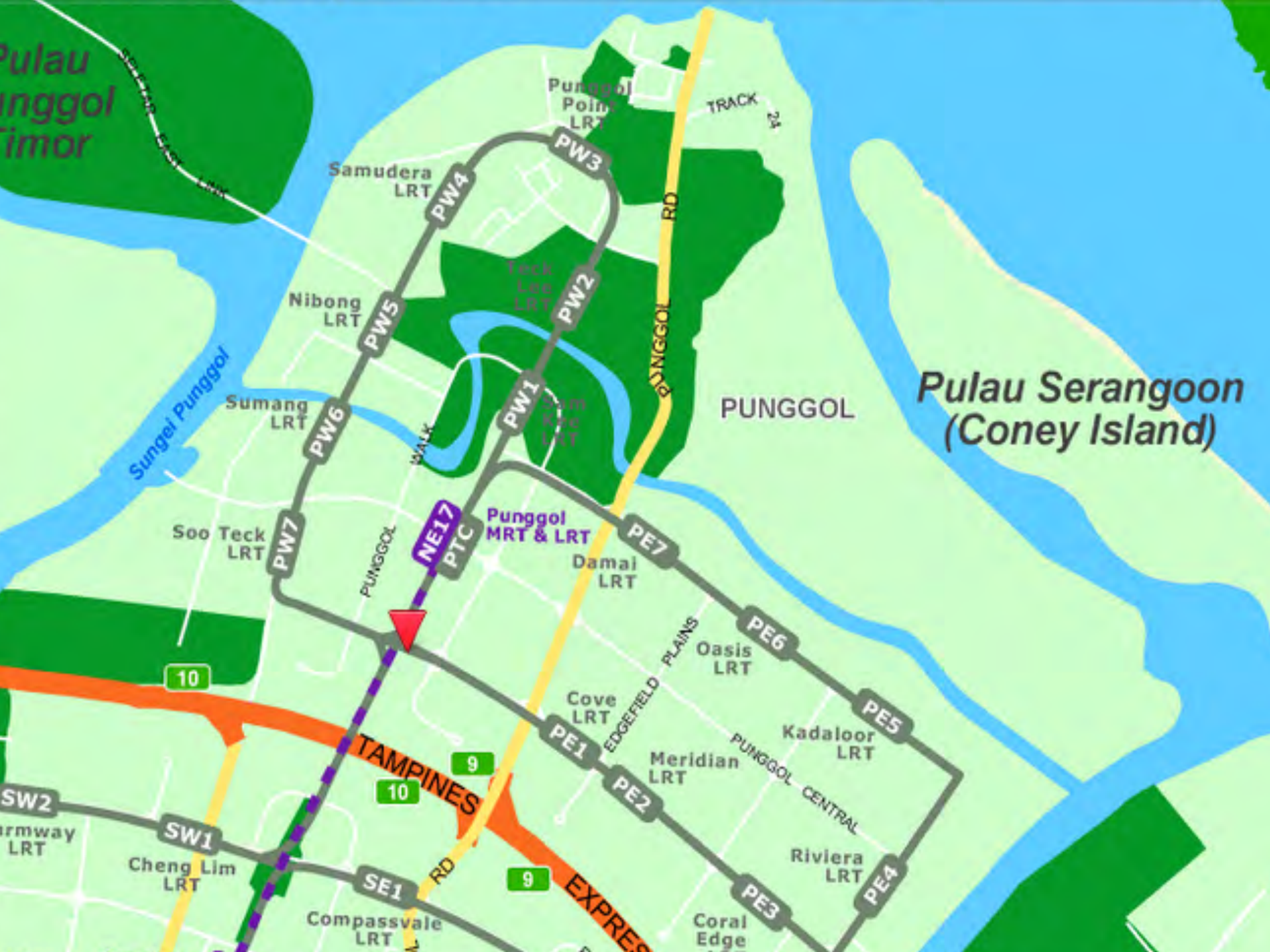
**HDB & private housing - set to be 96,000**  
**(2x the size of Ang Mo Kio)**  
**within the next 15 years!**

In 2013, the proportion of children was the highest in Punggol at **10 per cent**

# Churches in Punggol

- Church of the Nativity
- Central Christian Church
- **River of Life Community Church**
- **Church of Punggol/Sengkang**







River of Life Community Church

Pulau Serangoon  
(Coney Island)



## OUR VISION:

To be a Christ-centered and Spirit-filled Church discipling families to advance God's Kingdom in every generation.

## OUR THEME FOR 2014:

"Speak Lord, Thy Servant Listens" - 1 Samuel 3:9

March 2014

Mon	Tue	Wed	Thu	Fri	Sat	Sun
					1	2
3	4	5	6	7	8	9
10	11	12	13	14	15	16
17	18	19	20	21	22	23
24	25	26	27	28	29	30
31						
«Feb						Apr»







# DIRECTIONS TO CHURCH!

BY PUBLIC TRANSPORT / FREE SHUTTLE SERVICE



★ WE ARE HERE!





River of Life Community Church

Pulau Punggol Timur

Pulau Serangoon (Coney Island)

PUNGGOL

10

9

TAMPINES

9

EXPRESS

SW2

Armway LRT

SW1

Cheng Lim LRT

SE1

Compassvale LRT

PE3

Riviera LRT

PE4

Kadaloor LRT

PE5

Meridian LRT

PE2

Cove LRT

PE1

EDGEFIELD PLAINS

Damal LRT

PE7

Punggol MRT & LRT

PTC

NE17

Sumang LRT

PW1

Teck Lee LRT

PW2

Nibong LRT

PW5

Samudera LRT

PW4

Punggol Point LRT

PW3

TRACK 24

Sungai Punggol

River of Life Community Church





Church of Sengkang / Punggol









# Church of Ponggol Sengkang

We just CARE



"A new command I give you: Love one another."

Join us on Sunday!

~ 10:15 AM -12:30 PM

Sunday School Classes for all children below age of 12 years old

~ 9:30 AM -10:00 AM

The COPS Café

(Grab a snack, cup of coffee or tea and meet new friends)

~ 10:30 AM -12:30 PM

Celebration and Worship Service

[START HERE](#)

[ABOUT US](#)

[MINISTRIES](#)

[MEDIA](#)

[IN NEED OF HELP](#)

[GET CONNECTED](#)

[EVENTS CALENDAR](#)

## FROM THE PASTOR

"A new command I give you: Love one another. As I have loved you, so you must love another. By this all men will know that you are my disciples, if you love one another."  
John 13:34-35

At Church of Sengkang, we believe that one mark which all Christians are required to show if we are to be the true followers of Christ is LOVE.

Every Christian is expected to have this mark. It is possible to be a Christian without showing this mark. But if we expect non-Christians to know that we are Christians, we must show the mark of LOVE.

So through his grace, Church of Sengkang is called by God to extend love to the community in Sengkang/Punggol.

I hope you may come to a personal relationship with the God of Love.

In His Love,  
David Kerk  
Pastor



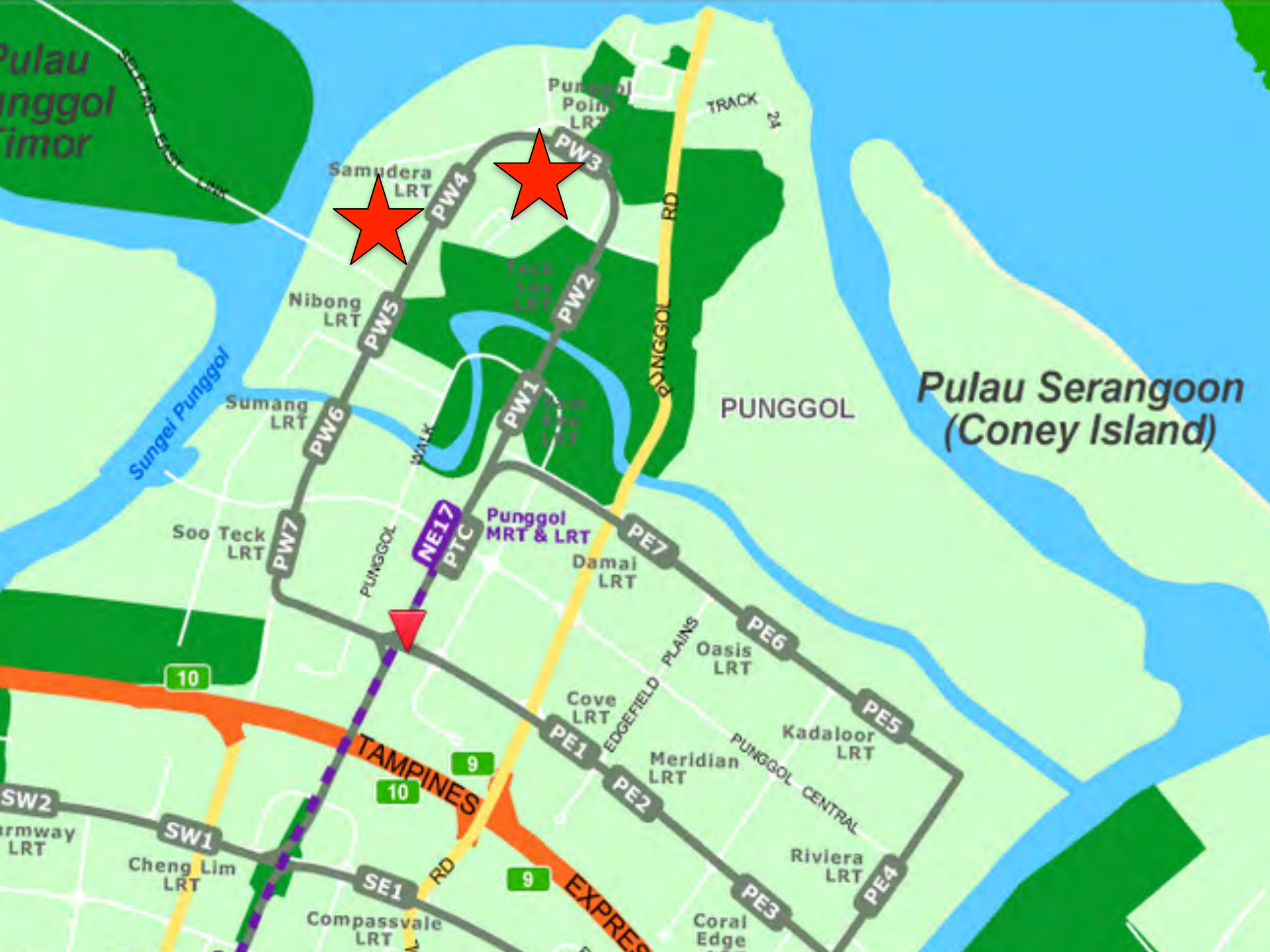
## QUICK LINKS

[facebook](#)

## NEWSFLASH

Creating environments where people are equipped and encouraged to point up, point in, and point out!

## BLOGS







**GLCC**





# Churches in Sengkang



- St Anne's Church
- Church of Latter Day Saints
- **Sengkang Methodist Church**
- **Abundant Grace Presbyterian Church**





Sengkang Methodist Church



聖公會  
Sengkang  
Methodist  
Church



LOVE 愛有團  
分享與  
分享與  
分享與





Sengkang Methodist Church





Abundant Grace Presbyterian Church



















# *The Punggol Dream*

**A Place to Call Home  
A Strategic Base to Reach an Exciting Generation**

**PCBC**

**Elder Leong (Chairman)**

**Pastors Paul, Yeo, Muk, Jason**



**PCBC**

**Elder Leong (Chairman)**  
**Pastors Paul, Yeo, Muk, Jason**

**Design**

Elder Leong  
Pastor Victor Yeo  
Sim Mui Hiang  
Seow Hong Chiow  
Daniel Cheong  
Tracy Chen  
Mun Hau Chan  
(Proj Coord July)

**PCBC**  
**Elder Leong (Chairman)**  
**Pastors Paul, Yeo, Muk, Jason**

**Design**

**Requirements**

Elder Leong  
Pastor Victor Yeo  
Sim Mui Hiang  
Seow Hong Chiow  
Daniel Cheong  
Tracy Chen  
Mun Hau Chan  
(Proj Coord July)

Pastor Jason  
Pastor Kay Hong  
Pastor Chee Keen  
May Lim



**PCBC**  
**Elder Leong (Chairman)**  
**Pastors Paul, Yeo, Muk, Jason**

**Design**

**Requirements**

**Finance**

Elder Leong  
Pastor Victor Yeo  
Sim Mui Hiang  
Seow Hong Chiow  
Daniel Cheong  
Tracy Chen  
Mun Hau Chan  
(Proj Coord July)

Pastor Jason  
Pastor Kay Hong  
Pastor Chee Keen  
May Lim

Pastor Victor Yeo  
Josephine Chua  
Josephine Ying  
Lani De Jesus

**PCBC**  
**Elder Leong (Chairman)**  
**Pastors Paul, Yeo, Muk, Jason**

**Design**

**Requirements**

**Finance**

**Legal**

Elder Leong  
Pastor Victor Yeo  
Sim Mui Hiang  
Seow Hong Chiow  
Daniel Cheong  
Tracy Chen  
Mun Hau Chan  
(Proj Coord July)

Pastor Jason  
Pastor Kay Hong  
Pastor Chee Keen  
May Lim

Pastor Victor Yeo  
Josephine Chua  
Josephine Ying  
Lani De Jesus

Pastor Victor Yeo  
Sandra Foong  
Tracy Chen



**PCBC**  
**Elder Leong (Chairman)**  
**Pastors Paul, Yeo, Muk, Jason**

**Design**

Elder Leong  
Pastor Victor Yeo  
Sim Mui Hiang  
Seow Hong Chiow  
Daniel Cheong  
Tracy Chen  
Mun Hau Chan  
(Proj Coord July)

**Requirements**

Pastor Jason  
Pastor Kay Hong  
Pastor Chee Keen  
May Lim

**Finance**

Pastor Victor Yeo  
Josephine Chua  
Josephine Ying  
Lani De Jesus

**Legal**

Pastor Victor Yeo  
Sandra Foong  
Tracy Chen

**Admin**

Benita Teo  
Lilian Heng  
Carol Teo  
Ted Teong

**PCBC**  
**Elder Leong (Chairman)**  
**Pastors Paul, Yeo, Muk, Jason**

**Design**

Elder Leong  
Pastor Victor Yeo  
Sim Mui Hiang  
Seow Hong Chiow  
Daniel Cheong  
Tracy Chen  
Mun Hau Chan  
(Proj Coord July)

**Requirements**

Pastor Jason  
Pastor Kay Hong  
Pastor Chee Keen  
May Lim

**Finance**

Pastor Victor Yeo  
Josephine Chua  
Josephine Ying  
Lani De Jesus

**Legal**

Pastor Victor Yeo  
Sandra Foong  
Tracy Chen

**Admin**

Benita Teo  
Lilian Heng  
Carol Teo  
Ted Teong

**Opportunity to Serve:**  
***Mechanical Engineer***  
***Electrical Engineer***



# Appointment of Consultants

# Appointment of Consultants

Project Manager and Architect:      Laud Architects Pte Ltd



# Appointment of Consultants

Project Manager and Architect:

Laud Architects Pte Ltd

Civil and Structural Engineers:

LSW Consulting Engineers

# Appointment of Consultants

Project Manager and Architect:	Laud Architects Pte Ltd
Civil and Structural Engineers:	LSW Consulting Engineers
Mechanical & Electrical Engineers:	PTP Engineers Pte Ltd

# Appointment of Consultants

Project Manager and Architect:	Laud Architects Pte Ltd
Civil and Structural Engineers:	LSW Consulting Engineers
Mechanical & Electrical Engineers:	PTP Engineers Pte Ltd
Quantity Surveyor:	Davis Langdon KPK Pte Ltd



# Appointment of Consultants

Project Manager and Architect:	Laud Architects Pte Ltd
Civil and Structural Engineers:	LSW Consulting Engineers
Mechanical & Electrical Engineers:	PTP Engineers Pte Ltd
Quantity Surveyor:	Davis Langdon KPK Pte Ltd
Insurance Advisor:	Marsh (Singapore) Pte Ltd

# Conditions

# Conditions

Plot Ratio is 1.6. Max GFA= 4,800 sqm on the 3000 sqm land



# Conditions

Plot Ratio is 1.6. Max GFA= 4,800 sqm on the 3000 sqm land

Min 50% GFA for worship spaces (halls & prayer rooms),

Max 40% religious ancillary (foyers/toilets/stairs/lifts/escalators)

Max 10% is for non-religious ancillary uses (office & kindergarten)

# Conditions

Plot Ratio is 1.6. Max GFA= 4,800 sqm on the 3000 sqm land

Min 50% GFA for worship spaces (halls & prayer rooms),

Max 40% religious ancillary (foyers/toilets/stairs/lifts/escalators)

Max 10% is for non-religious ancillary uses (office & kindergarten)

Min 140 car parking lots (stipulated by HDB)

Max Building height 30m above ground & max 5 storeys (excluding attic storey)

# Key Principles



# Key Principles

Maximization

# Key Principles

Maximization

Modesty

# Key Principles

Maximization

Modesty

Multi-functionality



# Key Principles

Maximization

Modesty

Multi-functionality

Maintainability

# Key Principles

Maximization

Modesty

Multi-functionality

Maintainability

Maneuverability

# Design Achievements

# Design Achievements

- 3 sanctuaries -1200, 400, 400 (partitionable)



# Design Achievements

- 3 sanctuaries -1200, 400, 400 (partitionable)
- 4 prayer halls - 50 to 110 pax

# Design Achievements

- 3 sanctuaries -1200, 400, 400 (partitionable)
- 4 prayer halls - 50 to 110 pax
- 8 meeting rooms on the 5<sup>th</sup> level

# Design Achievements

- 3 sanctuaries -1200, 400, 400 (partitionable)
- 4 prayer halls - 50 to 110 pax
- 8 meeting rooms on the 5<sup>th</sup> level
- Office for 20 pax on the attic with an extension on the 1<sup>st</sup> level

# Design Achievements

- 3 sanctuaries -1200, 400, 400 (partitionable)
- 4 prayer halls - 50 to 110 pax
- 8 meeting rooms on the 5<sup>th</sup> level
- Office for 20 pax on the attic with an extension on the 1<sup>st</sup> level
- A kindergarten on the attic (maximum space of 300 sqf)



# Design Achievements

- 3 sanctuaries -1200, 400, 400 (partitionable)
- 4 prayer halls - 50 to 110 pax
- 8 meeting rooms on the 5<sup>th</sup> level
- Office for 20 pax on the attic with an extension on the 1<sup>st</sup> level
- A kindergarten on the attic (maximum space of 300 sqf)
- A kitchen on the 1<sup>st</sup> level

# Design Achievements

- 3 sanctuaries -1200, 400, 400 (partitionable)
- 4 prayer halls - 50 to 110 pax
- 8 meeting rooms on the 5<sup>th</sup> level
- Office for 20 pax on the attic with an extension on the 1<sup>st</sup> level
- A kindergarten on the attic (maximum space of 300 sqf)
- A kitchen on the 1<sup>st</sup> level
- 95 parking lots in B1 & B2, and the rest on levels 1-3

# Design Achievements

- 3 sanctuaries -1200, 400, 400 (partitionable)
- 4 prayer halls - 50 to 110 pax
- 8 meeting rooms on the 5<sup>th</sup> level
- Office for 20 pax on the attic with an extension on the 1<sup>st</sup> level
- A kindergarten on the attic (maximum space of 300 sqf)
- A kitchen on the 1<sup>st</sup> level
- 95 parking lots in B1 & B2, and the rest on levels 1-3
- 2 lifts, 1 escalator set (one-directional, reversible), 5 stairs

# Design Achievements

- 3 sanctuaries -1200, 400, 400 (partitionable)
- 4 prayer halls - 50 to 110 pax
- 8 meeting rooms on the 5<sup>th</sup> level
- Office for 20 pax on the attic with an extension on the 1<sup>st</sup> level
- A kindergarten on the attic (maximum space of 300 sqf)
- A kitchen on the 1<sup>st</sup> level
- 95 parking lots in B1 & B2, and the rest on levels 1-3
- 2 lifts, 1 escalator set (one-directional, reversible), 5 stairs
- Toilet- 54 cubicles (13 male, 34 female, 7 children), 6 handicap toilets, 14 urinals



# Design Achievements

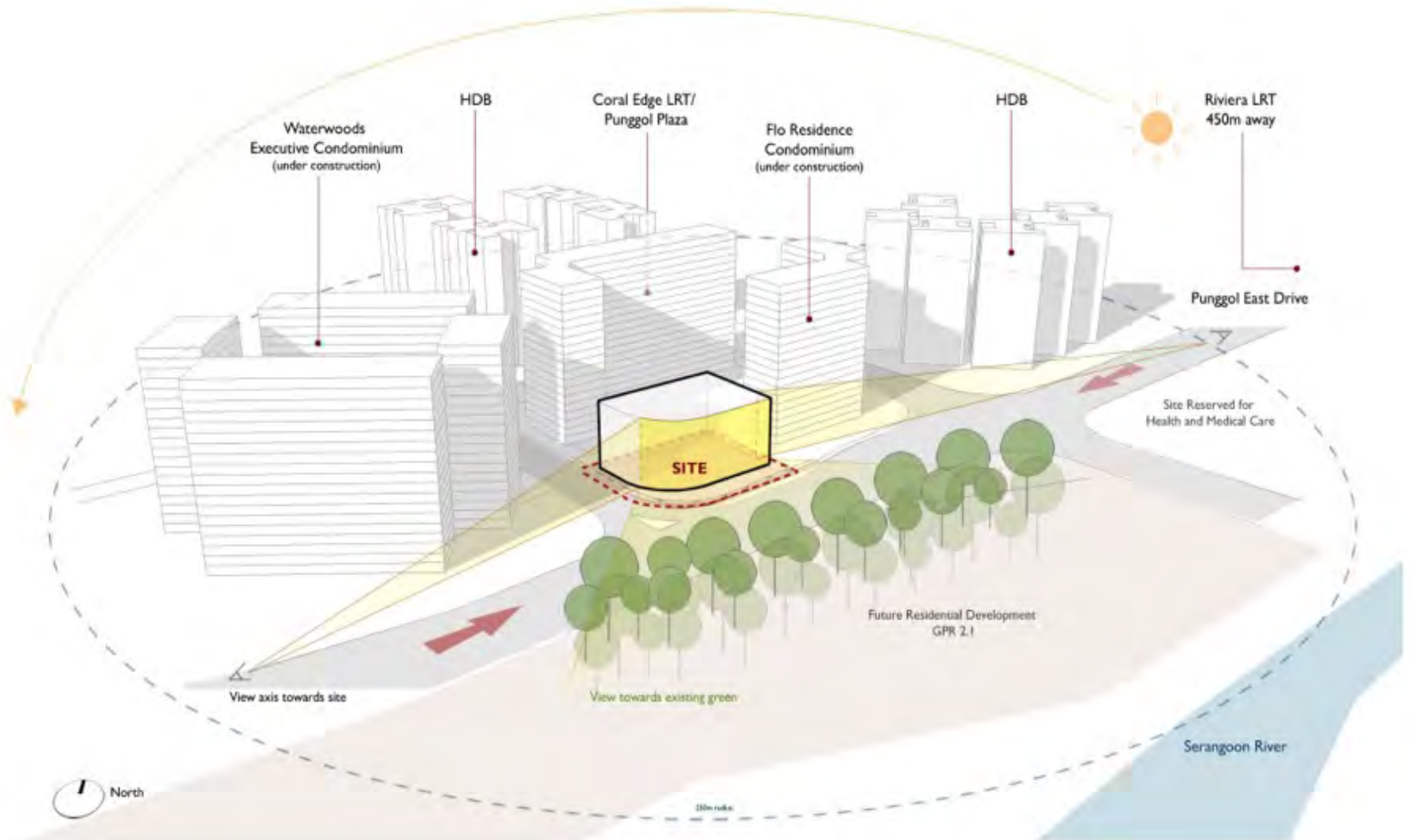
- 3 sanctuaries -1200, 400, 400 (partitionable)
- 4 prayer halls - 50 to 110 pax
- 8 meeting rooms on the 5<sup>th</sup> level
- Office for 20 pax on the attic with an extension on the 1<sup>st</sup> level
- A kindergarten on the attic (maximum space of 300 sqf)
- A kitchen on the 1<sup>st</sup> level
- 95 parking lots in B1 & B2, and the rest on levels 1-3
- 2 lifts, 1 escalator set (one-directional, reversible), 5 stairs
- Toilet- 54 cubicles (13 male, 34 female, 7 children), 6 handicap toilets, 14 urinals
- **Total 8 levels -2 basements, 5 floors and an attic.**

# Architectural Presentation



**SITE LOCATION**





## THE SITE CONTEXT

The church is sited on a prominent corner plot fronting a key road axis, Punggol East drive, with an exciting lush green and blue natural setting across the site. The design aim to capitalise on the frontage along the main road, facing the green and away from direct east and west sun.





### CARPARKING

4140 carparking lots with car drop off at each main floor level

+



### HALL 2 + 3

Hall 2 with 7 400 pax sitting capacity  
Hall 3 with 1 500 pax sitting capacity

+



### MAIN SANCTUARY

1 1200 pax seating capacity  
with cry room and changing room

+

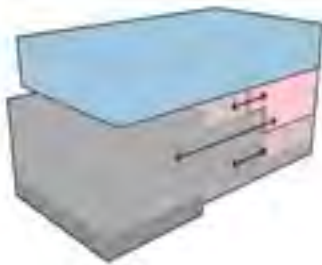


### ACTIVITIES SPACES

- 01 X administration office for 20 pax
- 01 X kindergarten for 80 children
- 02 X outreach project office (75-seed)
- 10 X 10 pax meeting rooms
- 07 X Work Therapy rooms (55sqm)
- 01 X kitchen, panini bar, library
- 01 X meeting room

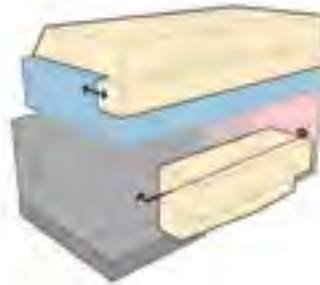
### WORSHIP HALLS

car parking is distributed to several floors; yet sited adjacent to main function spaces. Such proximity allows the car parking to be 'transformed' into fellowship spaces, spill-out zones, and additional meeting areas.



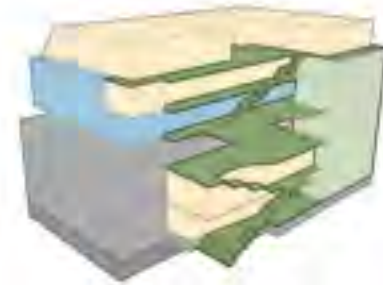
### ACTIVITY ROOMS

activity rooms cater to a variety of programmes while being connected physically and visually to main fellowship spaces.



### COMMUNITY PLATFORMS

the outdoor community platform provides a public connection between the fellowship hall and activity rooms while creating intimate settings and interesting spaces for social interaction.



So, we transformed the very provisions intended to meet the parking requirements, ramps and all, into vibrant, multi-level fellowship spaces that meet the needs of the similarly multi-generational members!

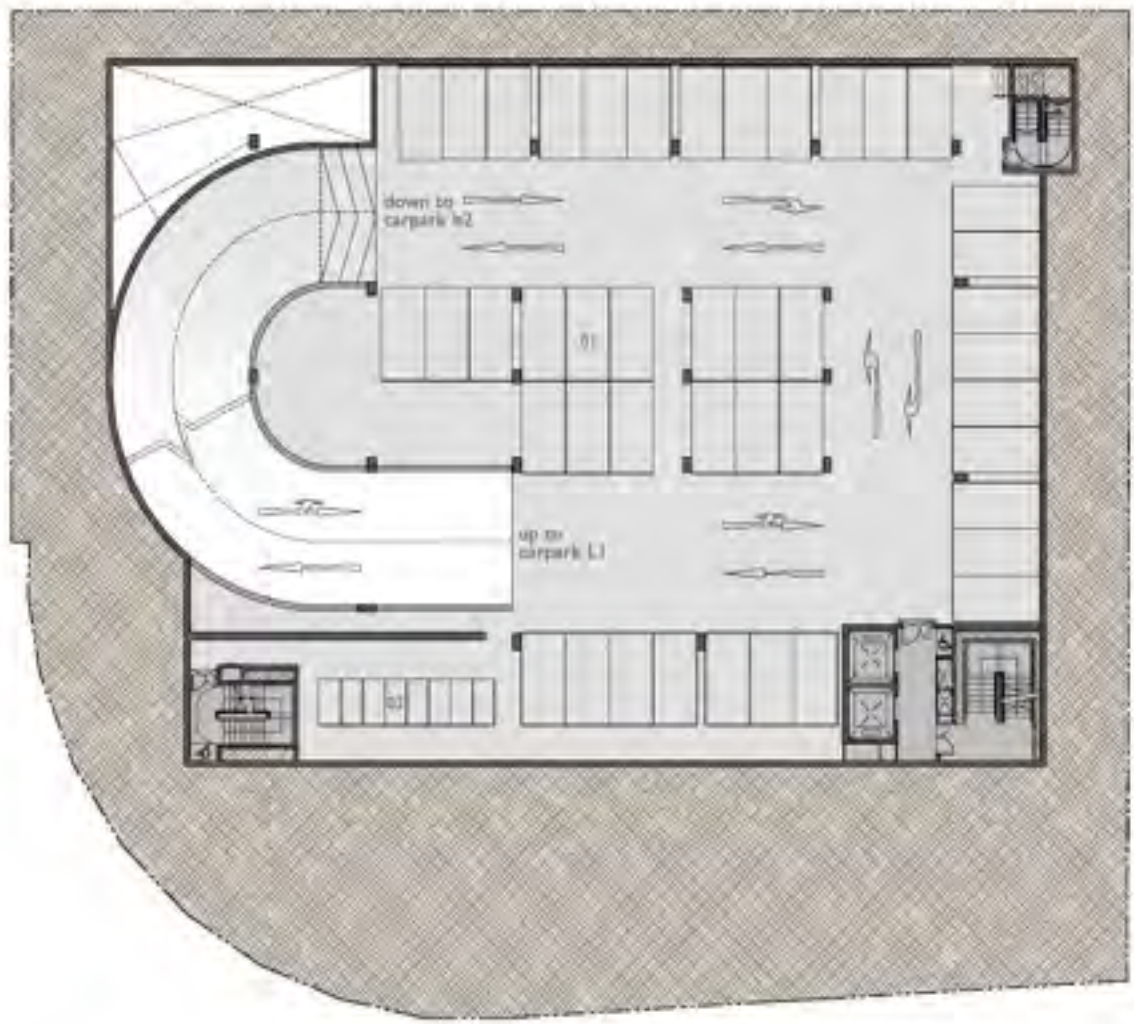






- Legend
- 01 vehicular ingress
  - 02 vehicular egress
  - 03 main pedestrian access
  - 04 carpark (24+ (hsp lot))
  - 05 fellowship space
  - 06 drop-off point
  - 07 entrance foyer
  - 08 reception
  - 09 kitchen
  - 10 m&e area

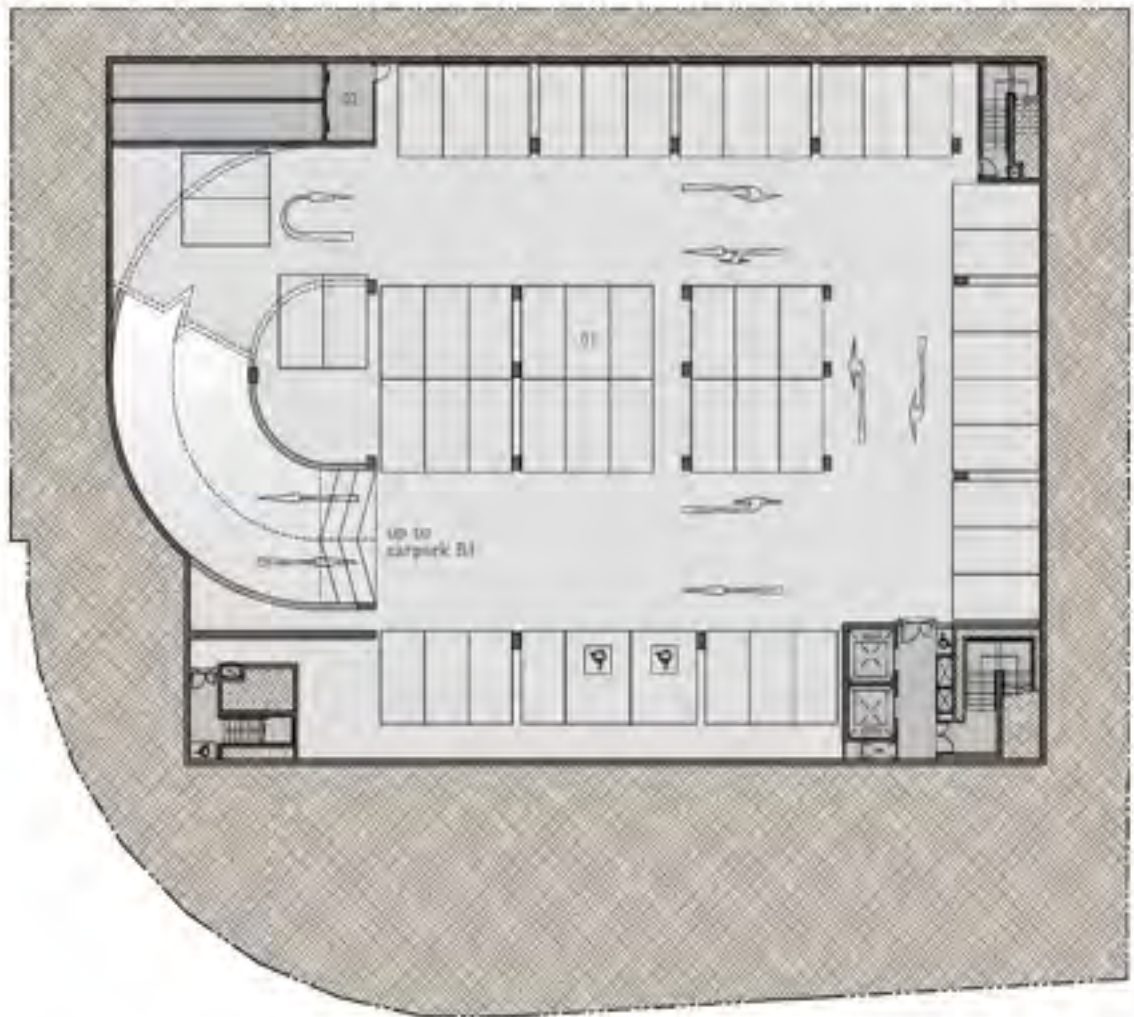
FIRST STOREY PLAN



- legend
- 01 carpark (43 lots)
  - 02 motorcycle lots (8 lots)

**BASEMENT | PLAN**





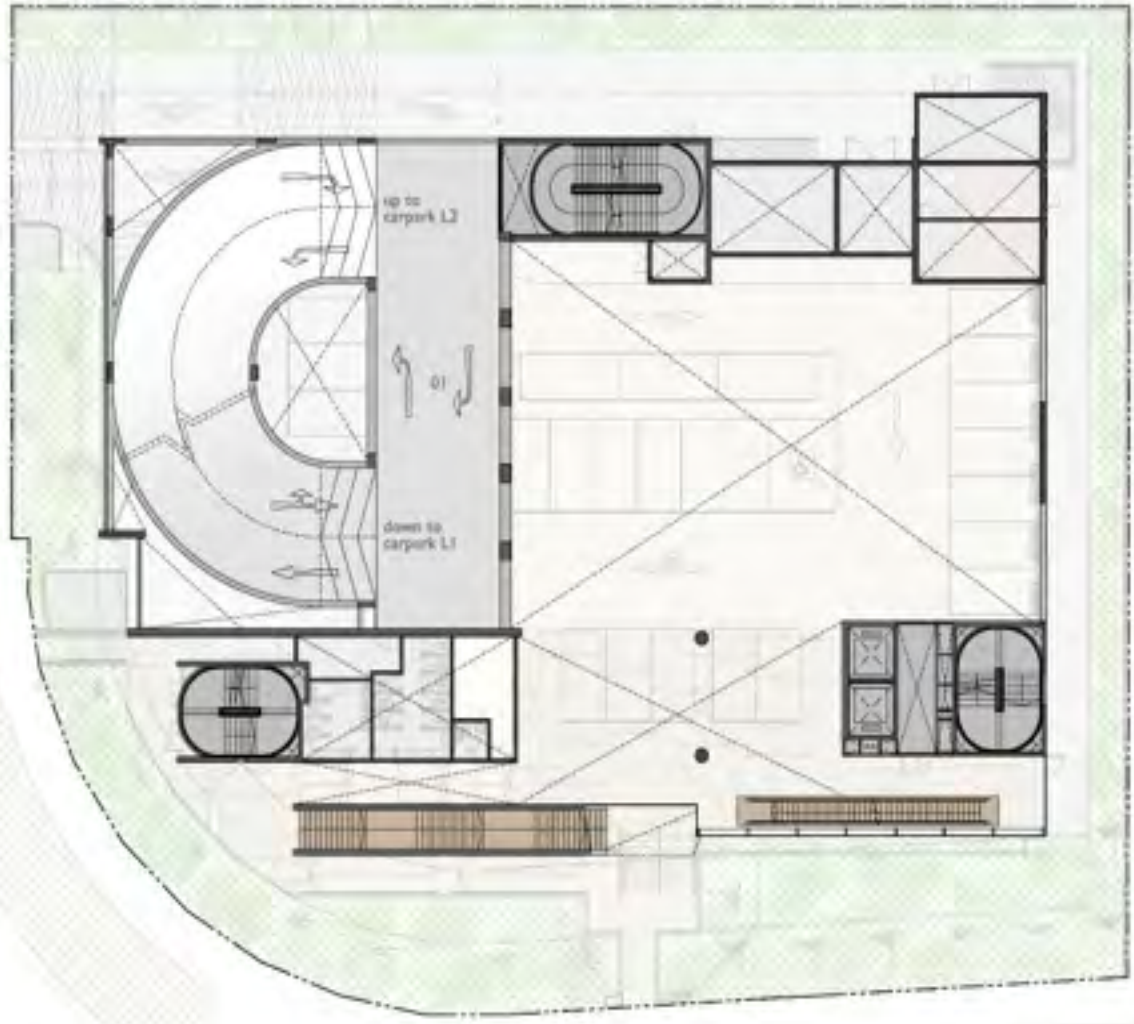
legend  
 01 carpark (50+20cp lots)  
 02 milk area

BASEMENT 2 PLAN



- Legend
- 01 vehicular ingress
  - 02 vehicular egress
  - 03 main pedestrian access
  - 04 carpark (24+ (hsp lot))
  - 05 fellowship space
  - 06 drop-off point
  - 07 entrance foyer
  - 08 reception
  - 09 kitchen
  - 10 m&e area

FIRST STOREY PLAN



legend  
01 driveway

FIRST STOREY  
MEZZ PLAN



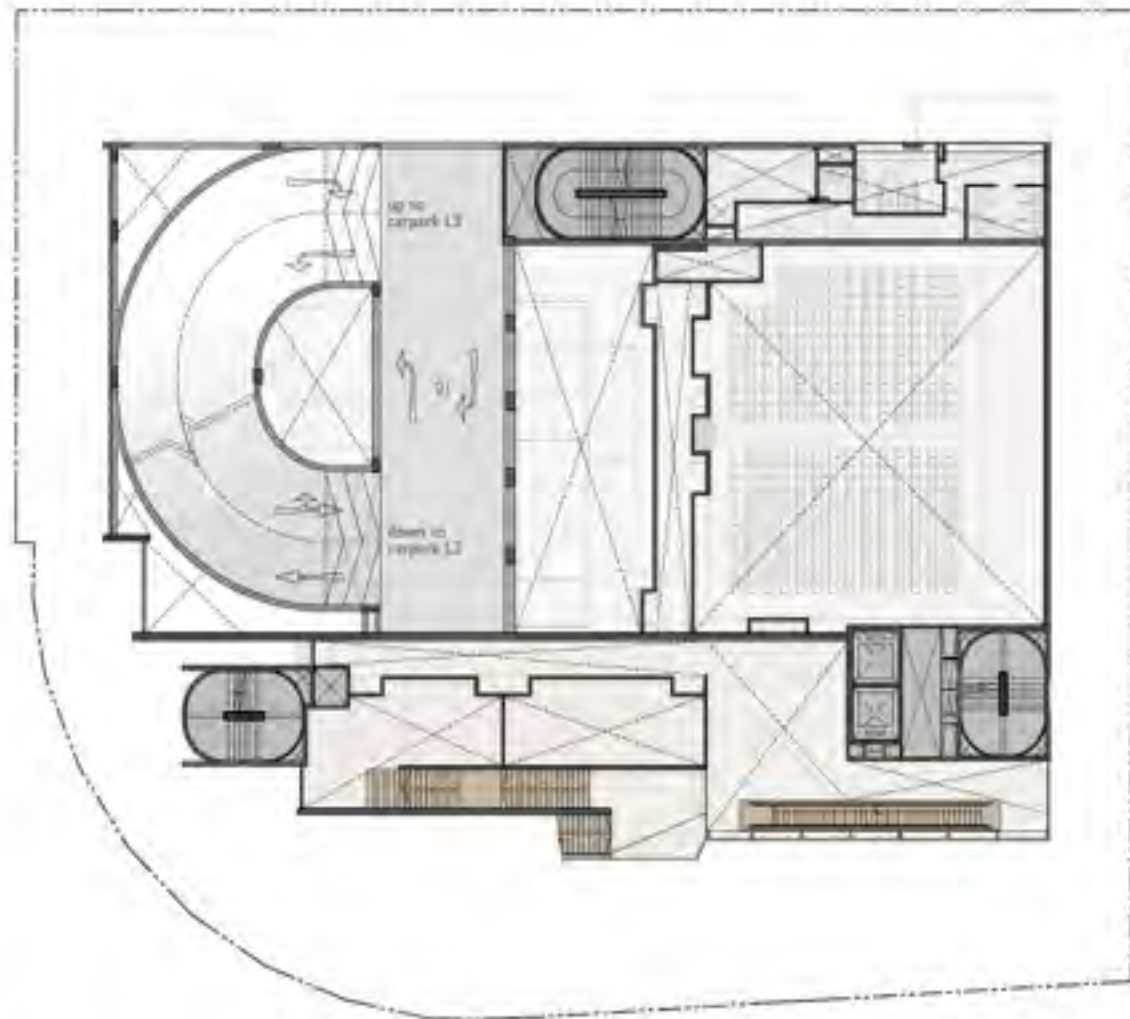


legend

- 01 sanctuary hall (400sqm)
- 02 prayer room
- 03 foyer
- 04 landscape deck
- 05 carpark (10 lots)

SECOND STOREY  
PLAN





Legend  
01 driveway

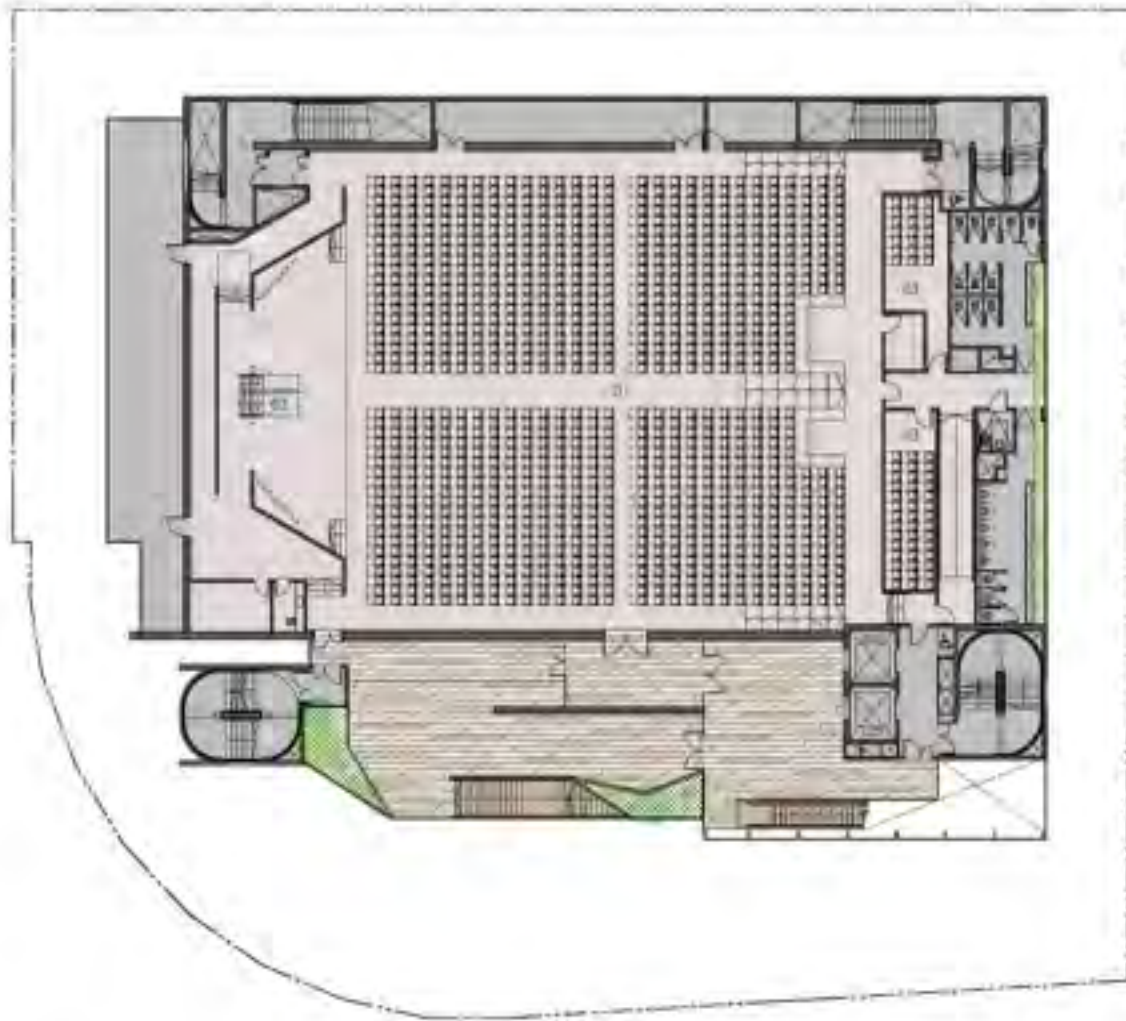
SECOND STOREY  
MEZZ PLAN



Legend:

- 01 sanctuary hall 3 (400 seats)
- 02 prayer room
- 03 foyer
- 04 landscape deck
- 05 carpark (11 lots)

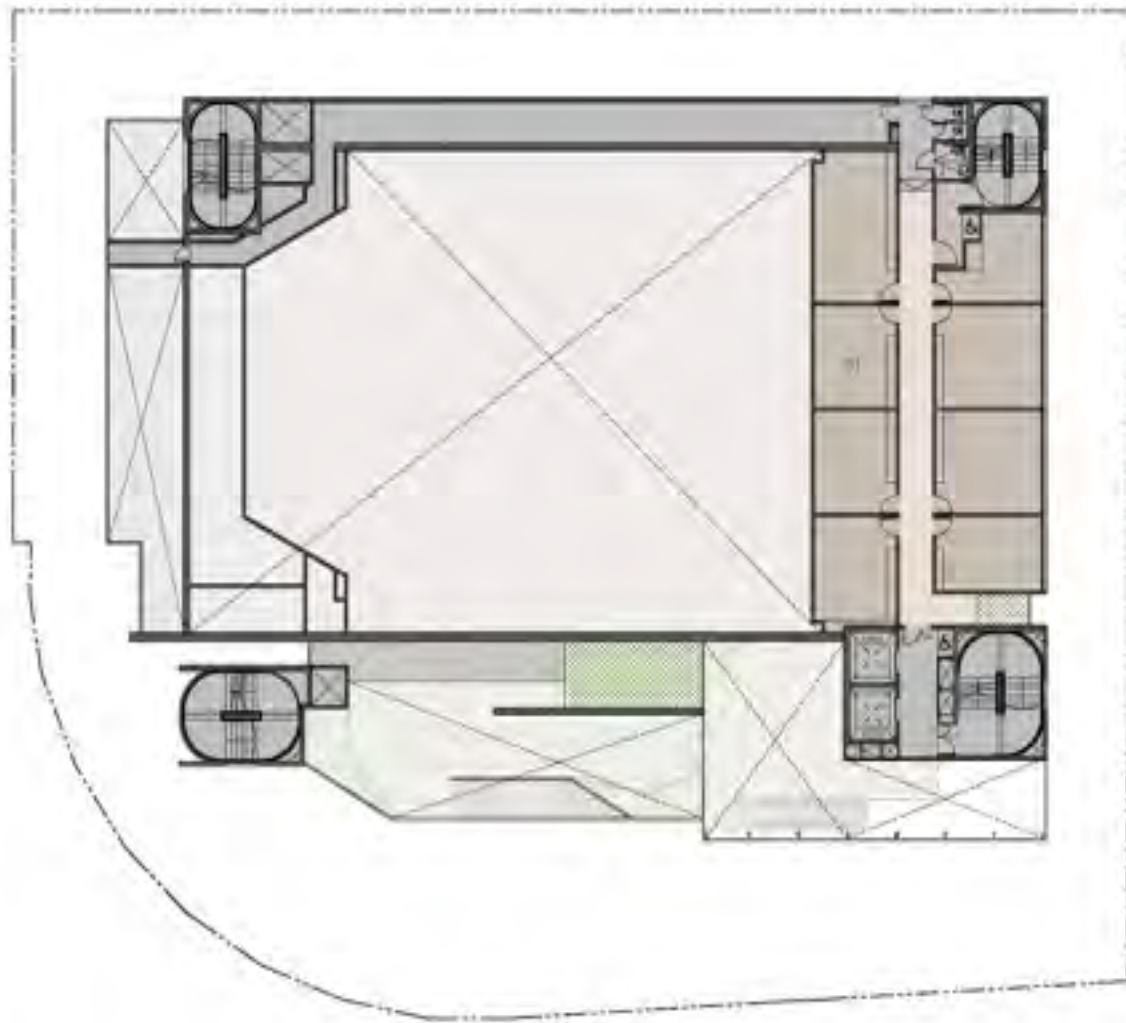
THIRD STOREY  
PLAN



Legend

- 01 main sanctuary (1700seats)
- 02 baptism pool
- 03 cry room

**FOURTH STOREY PLAN**



legend

01 prayer rooms (4)

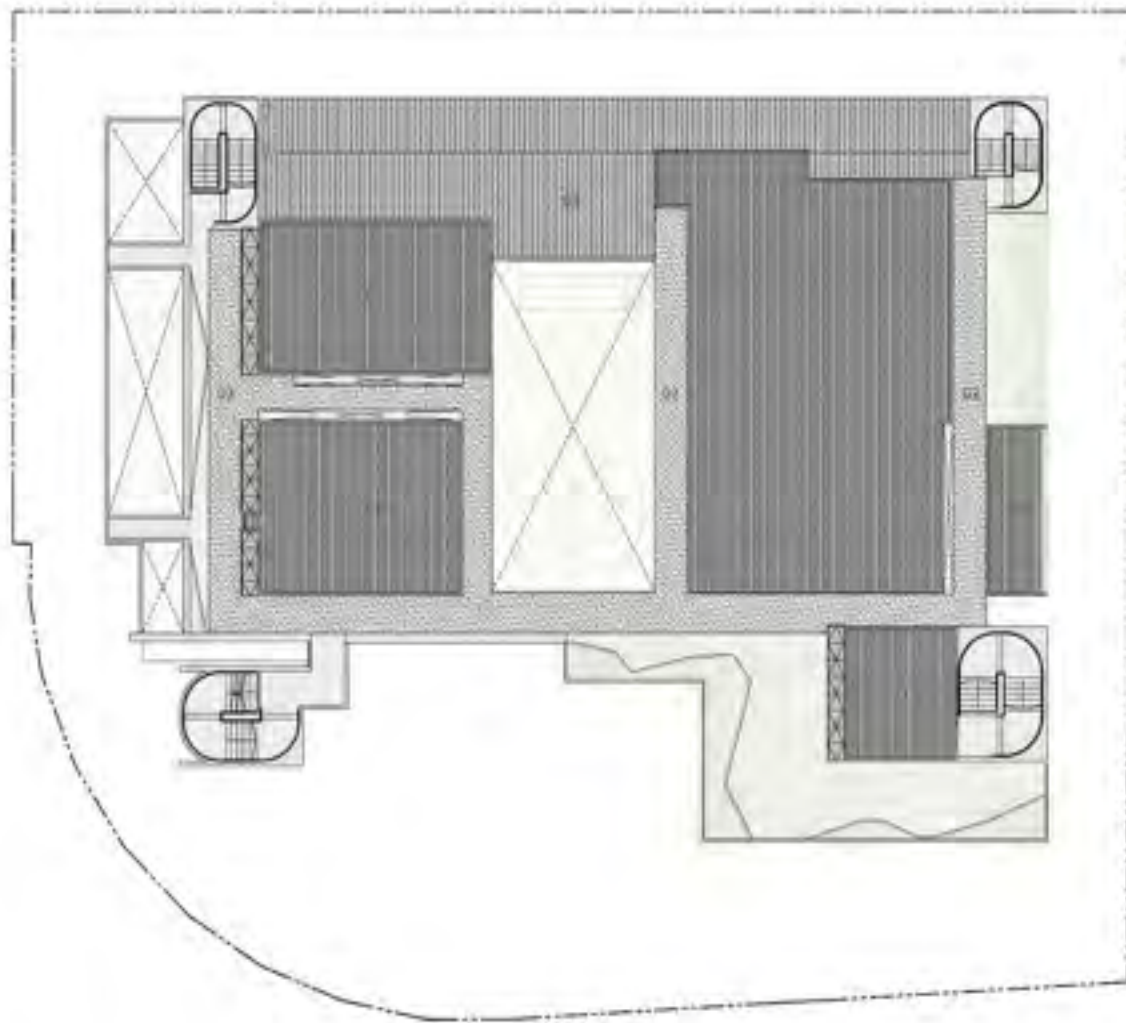
FIFTH STOREY  
PLAN





- Legend
- 01 staff office
  - 02 prayer room
  - 03 outdoor play area
  - 04 kindergarten
  - 05 outdoor garden
  - 06 mezz area  
(trails open to sky)

**ATTIC STOREY PLAN**



Legend

- 01 metal roof
- 02 reinforced concrete roof
- 03 aluminium trellis

ROOF STOREY  
PLAN



Legend

- 01 main sanctuary (1200px)
- 02 hall 3 (400px)
- 03 hall 2 (400px)
- 04 extended fellowship area
- 05 carpark
- 06 staff office
- 07 outdoor play area
- 08 kindergarten

SECTION AA



legend

- 01 main sanctuary (1200pax)
- 02 hall 3 (400pax)
- 03 hall 2 (400pax)
- 04 extended fellowship area
- 05 main foyer
- 06 main pedestrian entrance
- 07 carpark
- 08 prayer room
- 09 outdoor play area
- 10 m&e area

SECTION BB





Looking ahead

# Looking ahead

Provisional Permission has been obtained from URA after planning clearance of HDB, LTA, BCA & SCDF

# Looking ahead

Provisional Permission has been obtained from URA after planning clearance of HDB, LTA, BCA & SCDF

→ call tender for piling.



# Looking ahead

Provisional Permission has been obtained from URA after planning clearance of HDB, LTA, BCA & SCDF

→ call tender for piling.

Concurrently, seeking URA's Written Permission

→ main contract will be called.

# Looking ahead

Provisional Permission has been obtained from URA after planning clearance of HDB, LTA, BCA & SCDF

→ call tender for piling.

Concurrently, seeking URA's Written Permission

→ main contract will be called.

Prayerfully, the building can be completed in **mid 2016**.

→ Equipping & furnishing thereafter.

Finances

# **Congregational Briefing**

Finance Matters

24 August 2014



# Assumed Construction Cash Flow

Year	Q1	Q2	Q3	Q4	TOTAL
2014	0%	0.7%	0.2%	3.8%	4.7%
2015	4.9%	8.0%	14.0%	23.3%	50.2%
2016	22.4%	16.0%	4.2%	0.2%	42.8%
2017	0%	0%	2.3%	0%	2.3%
<b>TOTAL</b>					<b>100.0</b> %

# Original Financing Plan

From Gospeliters                      \$20m

*(excluding Pledges)*

# **“Standby” Financing Plan**

Financial Institution     \$19.4m

# Cumulative Giving

Gospeliters \$8.9m

*(as at 17 August 2014)*

# Gospeliters Giving

*(Excluding Pledges)*

Target Amount    \$20.0m

Giving To date    \$ 8.9m

Balance Target    \$11.1m



The “standby” facility is a safety net.

But it is available at the back end of the project.

And it is expensive.

After TOP, monthly principal and interest payment is in excess of \$160,000 for 12 years.

We should not aim to draw down the maximum loan amount.

**Target Giving (Sep 14 – Mar 15)**

**\$6 m**



